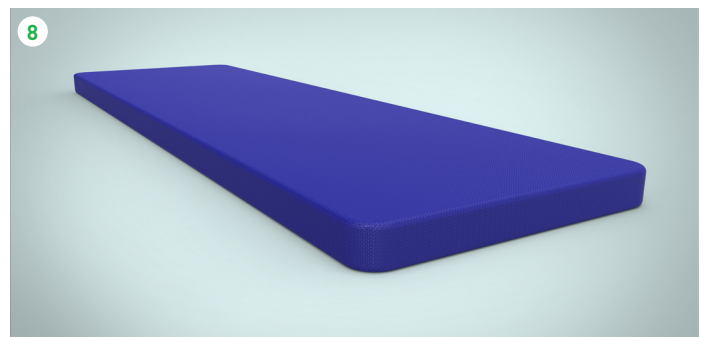
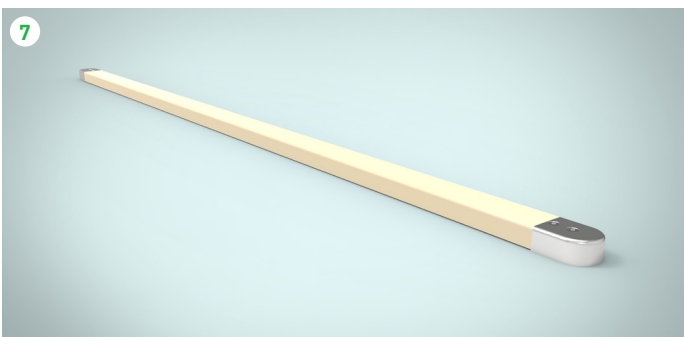
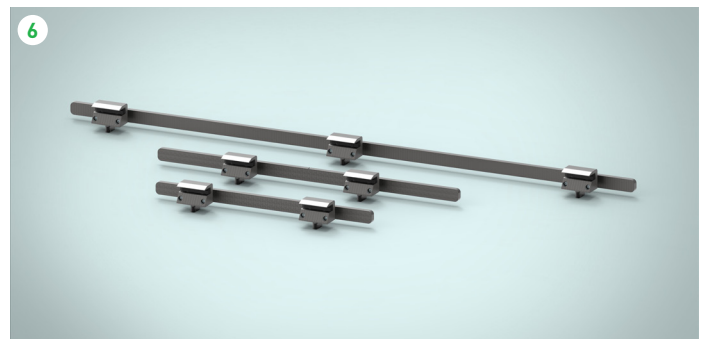
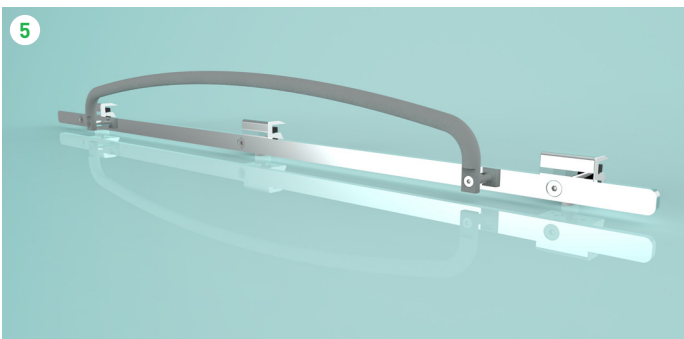
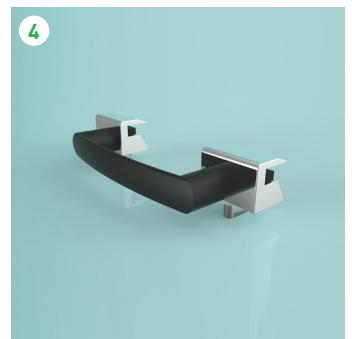
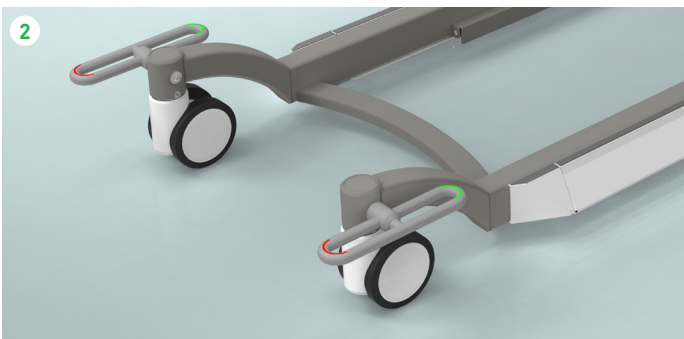
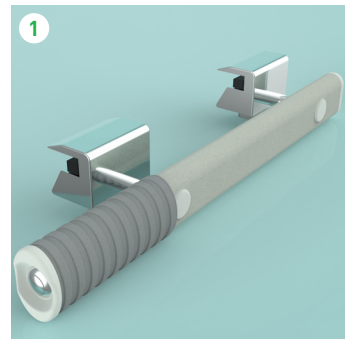
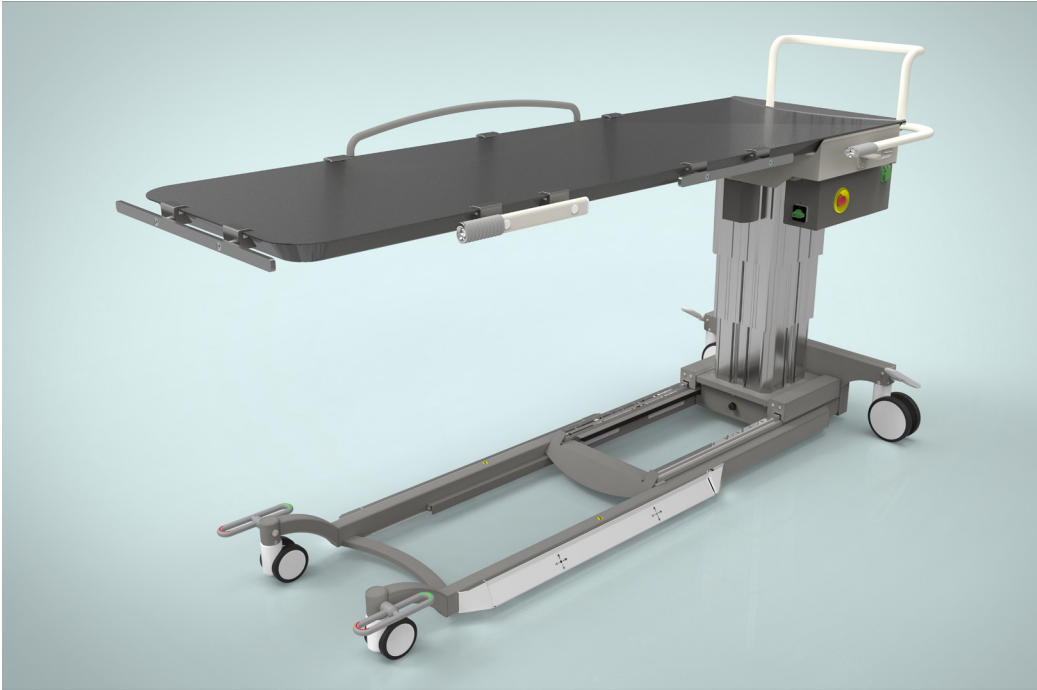


X Mobil / X Mobil Q



X Mobil / X Mobil Q

①

② B

X Mobil /Q 2

2

③ L

④ M

⑤

⑥

120, 64 46

⑦

⑧

3 7

X Mobil / X Mobil Q ACCESSORIES

① HANDLE WITH TABLE TOP RELEASE

The handle with table top release offers the user an additional key on the table top to engage the table top lock and therefore enable its function as a swimming table top.

② TWO-SIDED DOUBLE FOOT PEDAL

The X Mobil / Q comes with two different roller pairs that provide different functions. The doublefoot pedal at the front wheels enables easy locking of individual wheels.

③ STEERING HANDLE

The standard handle can be supplemented with an ergonomic steering handle. This allows for the best possible positioning. The steering handle is especially suited for moving the patient table comfortably and without strain on the back.

④ MOBILE HANDLES

The mobile handle provides additional handling support.

⑤ ACCESSORY RAIL WITH PATIENT HANDLE 120 CM

The accessory rail with patient handle provides the patient a place to hold on to.

⑥ ACCESSORY RAIL 120 CM, 64 CM UND 46 CM

The accessory rail is intended for attaching radiation protection aprons, IV poles, handles etc.

⑦ FLOOR GUIDE RAIL

This floor mounted rail allows an easier positioning of the table.

⑧ X-RAY TABLE COVER

Radiolucent pad which is available in thicknesses of 3 cm or 7 cm and as normal or nonslipping variant.